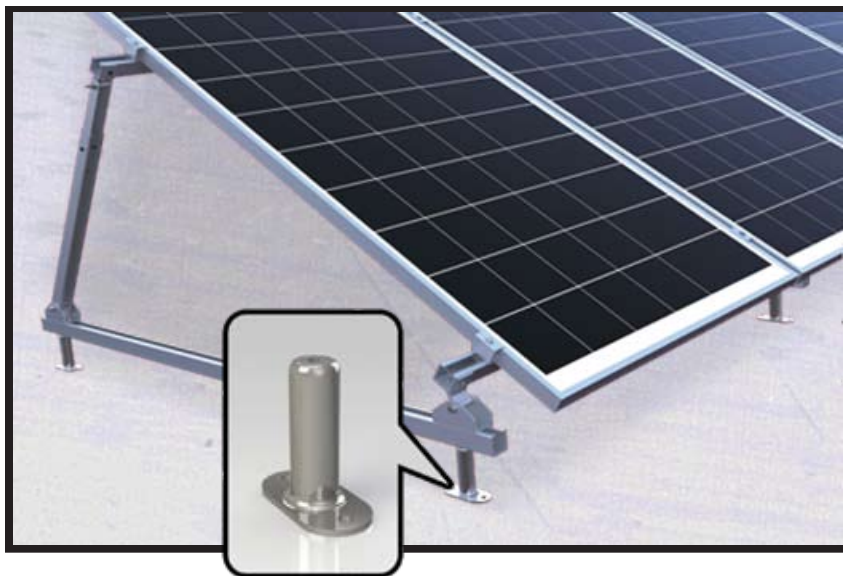




SUN EARTH

www.sunearthinc.com

PV RexRack Mounting Solution



SunEarth PV Tilt Mounting Systems

- Designed for optimal form and function to accommodate varied site specific conditions
- Engineered using high quality extruded aluminum - available with clear or bronze anodized finishes and stainless steel fasteners

System Major Components

- PV Tilt Kits are available with fixed legs (12", 18", 24") or adjustable legs (18"-28", 24"-41", 38"-65", 58"-97")
- PV End- & Mid- Clamp Sets are designed to accommodate module frame thickness of 1.1" (28mm) to 2.0" (50.8mm)
- Stand-off stanchions are available in durable black steel (4", 8", 12") or stainless steel (4", 8")