

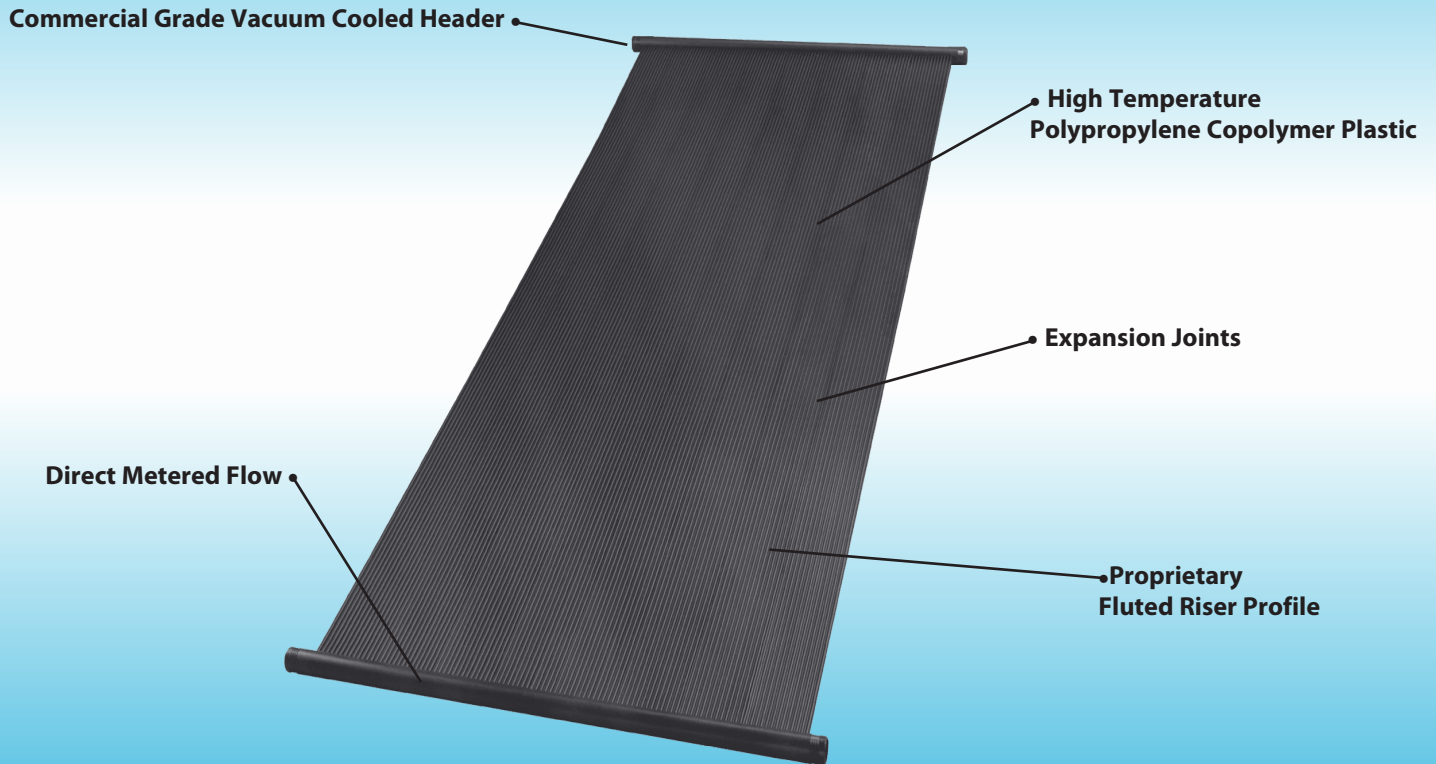


SUN EARTH

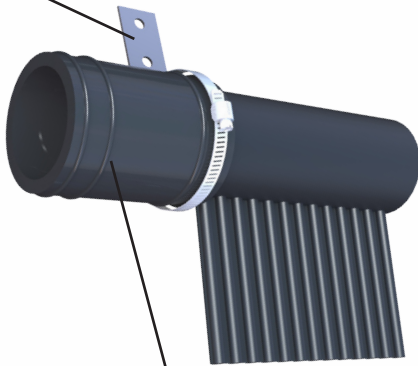
THE OASIS PP SERIES

PROPYLENE POOL COLLECTORS
SPECIFICATION SHEET MODEL OPP

ENGINEERED FOR THE SOLAR PROFESSIONAL



Optional Stainless Steel Mounting



Dual Durometer Couplings

Glass Reinforced Polypropylene Header Clamp



Machined Clamp Grooves

Fully Welded Construction

PROTECTING OUR ENVIRONMENT—SINCE 1978

SunEARTH OASIS PP SERIES SPECIFICATIONS

SunEarth Model No.	Width Inches	Length Inches	Depth Inches	Gross Area Sq Ft	Dry Weight, Lbs.	Fluid Capacity U.S. Gallons	Water Design Flow Rate GPM	Max Flow Rate GPM	Std. Header Width, Inches	Std. Header Diameter, Inches Nominal
OPP-32-1.5	46.8	94.44	1.92	31.43	14.3	2.5	3.25	10	50.5	1.5
OPP-40-1.5	46.8	118.08	1.92	39.29	17.1	2.9	4.0	10	50.5	1.5
OPP-48-1.5	46.8	143.64	1.92	47.25	21.5	3.2	5.0	10	50.5	1.5
OPP-32-2	46.8	94.44	2.4	31.43	15.3	3.1	3.25	10	50.5	2
OPP-40-2	46.8	118.08	2.4	39.29	18.1	3.5	4.0	10	50.5	2
OPP-48-2	46.8	143.64	2.4	47.25	22.3	3.8	5.0	10	50.5	2

THERMAL PERFORMANCE RATINGS*

Category (Ti-Ta) <small>Ti = inlet fluid temp Ta = ambient air temp</small>	BTU/ft ² -Day		
	High Radiation 2000 BTU/ft ² -Day	Medium Radiation 1500 BTU/ft ² -Day	Low Radiation 1000 BTU/ft ² -Day
A(-9°F)	2200	1800	1400
B(9°F)	1400	1000	600

A-Pool Heating (Warm Climate) B-Pool Heating
Thermal performance is obtained by multiplying the collector output for the appropriate application and insolation level by the total gross collector area.
 Standard 100 Tested at water design flowrate.

ENGINEERING SPECIFICATIONS

(Performance specifications subject to testing error of +/- 3%)

GENERAL

The following shall be the specifications for the solar collectors. Collectors shall be SunEarth Oasis OPP model _____, and shall be of the unglazed liquid flat plate type. Collectors shall meet or exceed the minimum standards established by the International Association of Plumbing and Mechanical Officials (IAPMO) and shall include NSF-50 listing.

The collector shall be fabricated from a propylene copolymer with stabilizer combination providing long term resistance to heat and light. The collector shall be capable of withstanding an internal static test pressure of 100 psig

and working pressure of 50 psig per ANSI/NSF 50, Annex B.3; shall pass a 20,000 cycle pressure test per Annex B.1, and shall be resistant to corrosion, the effects of freezing, and internal scale accumulation.

PERFORMANCE CRITERIA

The minimum instantaneous efficiency of the collector shall be 92% given equal ambient and collector inlet temperatures with a wind velocity of 0 mph.

ACCESSORIES (SOLD SEPARATELY)

The following accessory components can be purchased from SunEarth in order to complete your solar pool system.

OPP-10003-1 **1.5" VACUUM RELIEF**, 1.5 inch end cap style vacuum relief valve. For use on ground mounted systems or one story installations.

OPP-10003-2 **2" VACUUM RELIEF**, 2 inch end cap style vacuum relief valve. For use on ground mounted systems or one story installations.

OPP-12034-1 **1.5" COLLECTOR INSTALL KIT**, Contains two connector hoses (3 3/4" long) four hose clamps (Stainless Steel) two hold-down strap bracket, and one outlet header hold-down bracket assembly.

OPP-12034-2 **2" COLLECTOR INSTALL KIT**, Contains two connector hoses (3 3/4" long) four hose clamps (Stainless Steel) two hold-down strap bracket, and one outlet header hold-down bracket assembly.

OPP-10121 **1.5" & 2" HEADER CLAMP**, Can be used for both 1.5" and 2" headers.

OPP-10117-2 **2" ALUMINUM HEADER CLAMP**, 2" Aluminum Header Clamp Assembly

OPP-12135-1 **1.5" SYSTEM KIT** 1.5" Additional hold-down hardware, connection parts and adapters needed to complete water connections from the collectors to the system feed and return line.

PP-12135-2 **2" SYSTEM KIT**, 2" Additional hold-down hardware, connection parts and adapters needed to complete water connections from the collectors to the system feed and return line.

OPP-12043-1 **1.5" ADD A ROW KIT**, Used when more than one row of collectors is to be installed.

OPP-12043-2 **2" ADD A ROW KIT**, Used when more than one row of collectors is to be installed.

OPP-10040 **HOLD DOWN STRAP**, Poly-propylene coated stainless steel strap for securing solar pool panels.

OPP-10011 **STRAP HOLD DOWN CLAMP**, Stainless steel end clamp assembly with set screw for securing hold down strap.

Due to SunEarth's policy of continuous product improvement, specifications are subject to change without notice.

SUPPLIED BY:



SunEARTH

8425 Almeria Ave. • Fontana, CA 92335
 (909) 434-3100 • Fax (909) 434-3101

www.sunearthinc.com

AVAILABLE FROM:

RECYCLED PAPER—SOY BASED INK