

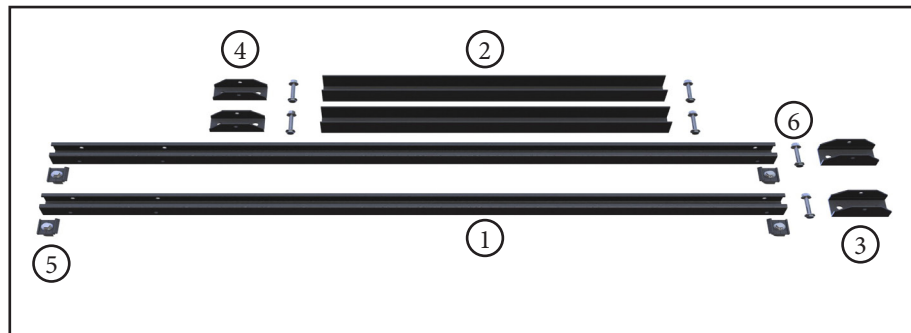


## Landscape Rack Installation Instructions

MTG-LSR-42-\_\_ & MTG-LSR-52-\_\_

Thank you for purchasing the SunEarth Landscape Rack. The use of all stainless steel hardware and 6063-T6 structural aluminum makes the SunEarth Landscape Rack a simple, strong, and durable solution for your landscape or sawtooth racking needs.

### Package Contents:



- ① 2 EA Support Strut 42" or 52" Length, (Black Anodized pictured)
- ② 2 EA Rear Leg, 2" x 2" C Channel
- ③ 2 EA Front Foot, 2" x 2" C-Channel, 4" Length
- ④ 2 EA Rear Foot, 1 1/2" C-Channel, 4" Length
- ⑤ 4 EA C-SSN (collector clip, 3/8" x 1" stainless steel bolt, 2 x washers, 1 x lock washer, 1 x nut)
- ⑥ 6 EA Bolt Assembly (5/16" x 2 1/2" stainless steel bolt, 2 x washers, 1 x lock washer, and 1 x nut)

### Suggested Installation Steps



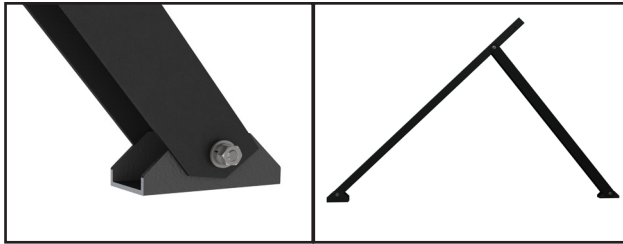
#### Step 1

Determine Front Feet positions and securely fasten Front Feet ③ to mounting surface using an acceptable fastening method for the mounting surface and your local conditions.

#### Step 2

Insert Support Strut into Front Foot, insert bolt, and tighten nut. Make sure not to over tighten. SunEarth recommends tightening the nut approximately 1/2 turn past the setting of the lock washer or torque of 12ft lbs. Repeat for remaining Support Strut.

Step 3

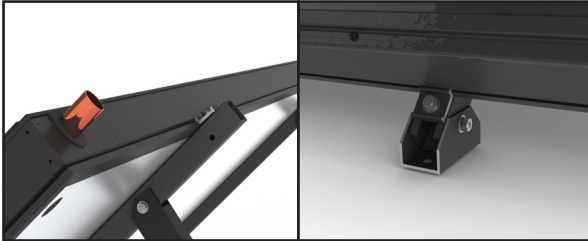


Assemble Rear Legs [2] [4] and [6] and position the legs to the desired angle using the pre-drilled holes (See Angle and Spacing Table below). Mark the position of Rear Feet and securely fasten to mounting surface. Detach the Rear Leg from the Support Strut and Rear Feet. Lower the Support Strut to the mounting surface.

Models may include more than two rear leg positioning holes. Utilization of holes other than the two outer most holes is **PROHIBITED**, since doing so may impact the structural capacity of the rack.

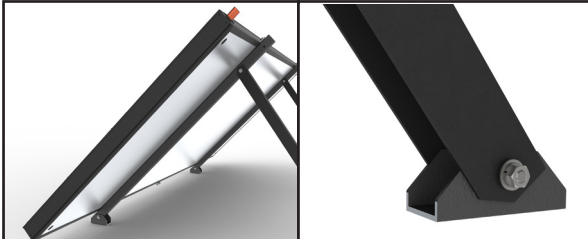
Angle and Foot Spacing Table									
	1st Hole								
	20°	26°	29°	38°	40°	45°	50°	55°	60°
MTG-LSR-52-19	51.75"	-	-	-	-	-	-	-	-
MTG-LSR-52-25.5	-	54.5"	42.5"	-	-	-	-	-	-
MTG-LSR-52-40	-	-	-	62.25"	59.25"	51"	39.25"	-	-
	24°	26°	31°	38°	40°	45°	50°	55°	60°
MTG-LSR-42-19	42.5"	34.75"	-	-	-	-	-	-	-
MTG-LSR-42-25.5	-	-	45.5"	30.5"	-	-	-	-	-
MTG-LSR-42-40	-	-	-	-	-	54.75"	49"	43.5"	37.75"
	2nd Hole								
	22°	25°	29°	34°	42°	45°	50°	55°	60°
MTG-LSR-52-19	46.25"	39.25"	-	-	-	-	-	-	-
MTG-LSR-52-25.5	-	-	49"	35.5"	-	-	-	-	-
MTG-LSR-52-40	-	-	-	-	57.5"	54.5"	48"	41"	32.5"
	27°	32°	36°	40°	45°	49°	50°	55°	60°
MTG-LSR-42-19	37.25"	27.75"	-	-	-	-	-	-	-
MTG-LSR-42-25.5	-	-	40.75"	36"	28"	-	-	-	-
MTG-LSR-42-40	-	-	-	-	-	50.75"	50"	46.25"	42.25"

Step 4



Position collector face up on the Support Strut, insert clips into Support Strut, and secure collector to Support Strut with clips. SunEarth recommends placing the Support Strut approximately 10 ~ 20% in from each end of the collector for maximum strength.

Step 5



Tilt the collector up, position the Back Legs to the desired angle, insert the bolts, and tighten nuts. Attach Rear Legs to Support Strut, lower collector, and insert Rear Legs into Rear Feet. Insert bolt and tighten.

Complete Installation



**Note:** In situations where the rack is to be mounted other than parallel to the roof line, cross bracing may be necessary. If you have any questions or feedback, please feel free to email us at [sales&support@sunearthinc.com](mailto:sales&support@sunearthinc.com).